



Dental Office Products 2024-2025
Quality solutions for your success.

Giving a hand to oral health.



KULZER
MITSUI CHEMICALS GROUP

Dear customers,

I am Chris Holden, CEO at Kulzer.

I've never been more excited in my 3 decades of being in this industry than I am now to be working with such a great team and to work towards strengthening our partnerships together.

Here at Kulzer, we are dedicated to driving our goals of patient satisfaction and not only this, but helping to bring you solutions driven by technologies that allow you to improve the lives of your patients more quickly, more easily, with better results.

This is the greatest time to be in the dental industry.

We've never seen technologies driving aesthetics and efficiency in such a way as we do today.

And yet there are challenges, many challenges that we still face, and we will do that **TOGETHER!**

We will do that through our partnership together.

That is our commitment to you.

It is our commitment to your patients.

I look forward to working more closely with you than ever before.

Thank you.

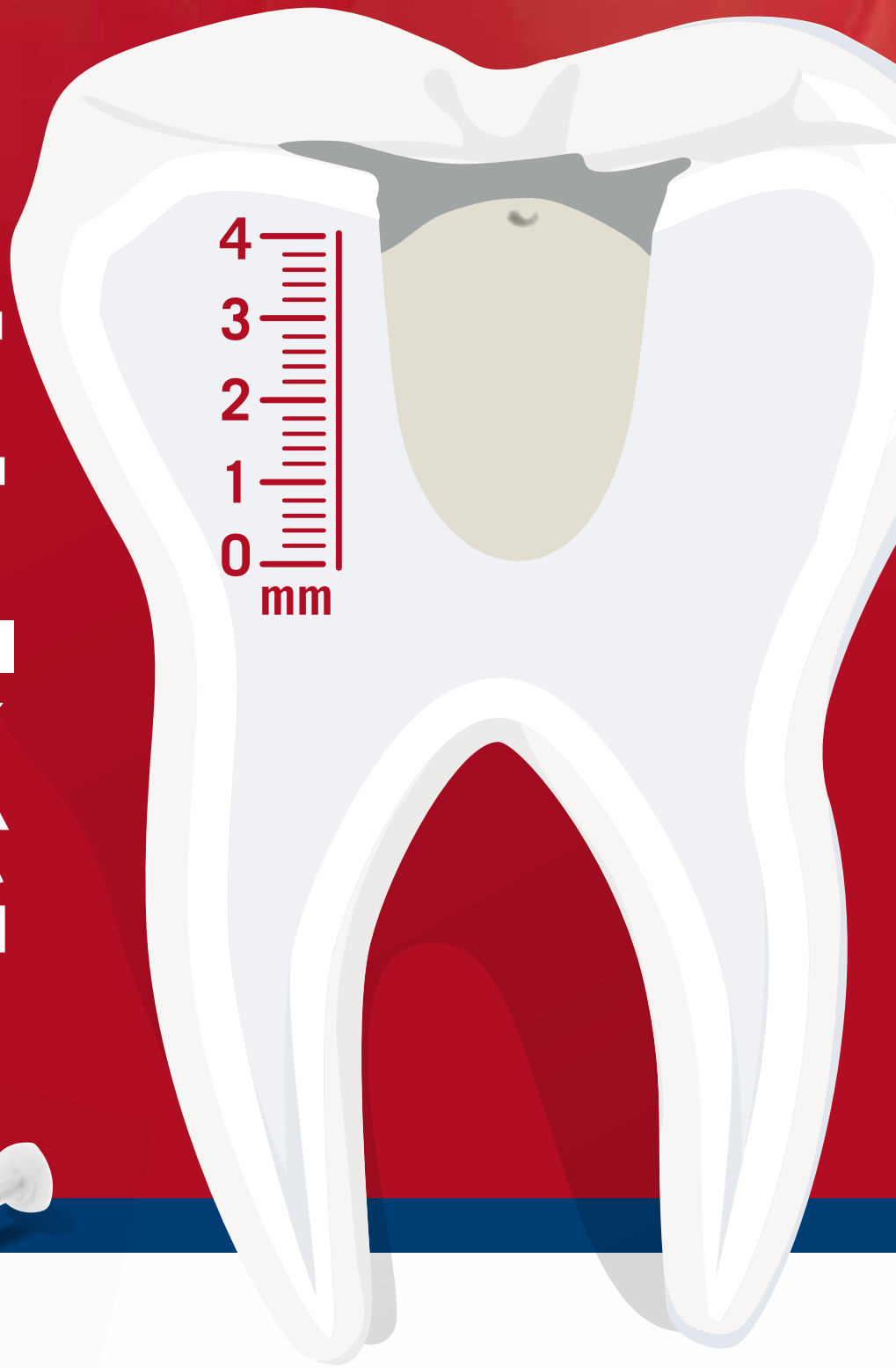
Chris Holden, CEO



CONTENT

1	RESTORATIVES	3
1.1	Filling Materials	4-12
	Charisma® Diamond	4
	Charisma® Diamond ONE	5
	Charisma® Topaz	6
	Charisma® Topaz ONE	7
	Charisma® Classic	8
	Charisma® Smart	9
	Charisma® Bulk Flow ONE	10-11
	Charisma® Flow & Charisma® Opal Flow	12
1.2	Light Curing, Polishing, Individualization	13
	Starlight Pro Charisma® EasyShine Venus® Color	13
1.3	Adhesives	14-18
	GLUMA® Bond Universal	15
	GLUMA® Ceramic Primer	16
	GLUMA® 2Bond	17
	GLUMA® Bond5 & GLUMA® Etch	18
2	IMPRESSION TAKING	19
2.1	Soft Tissue Management	21
	RetraXil®	21
2.2	A-Silicone VPS Precision Impression Materials	23-25
	Variotime®	23
	Dynamix® Speed 2	24
	Variotime® Product Outline	25
2.3	Bite Registration & Special Indications	26
	Variotime® Bite Memosil® 2	26
2.4	C-Silicone Impression Materials	29
	Oxasil®	29
2.5	Prosthetics Accessories	30
	Universal Adhesive Mixing Tips Dispensing Guns	30
	Dynamix Speed Cartridge Accessories	30
2.6	Alginates	31
	Alginoplast® Alligat® Xantalgin®	31
2.7	Cementation	32
	iCEM® Self Adhesive	32
2.8	Provisionals	33
	Prevision® Temp	33
3	PAIN CONTROL	34
3.1	Desensitizer	35
	GLUMA® Desensitizer	35
3.2	Dental Needles	36
	SeleKt+®	36

ONE SHADING MEETS BULK FILLING



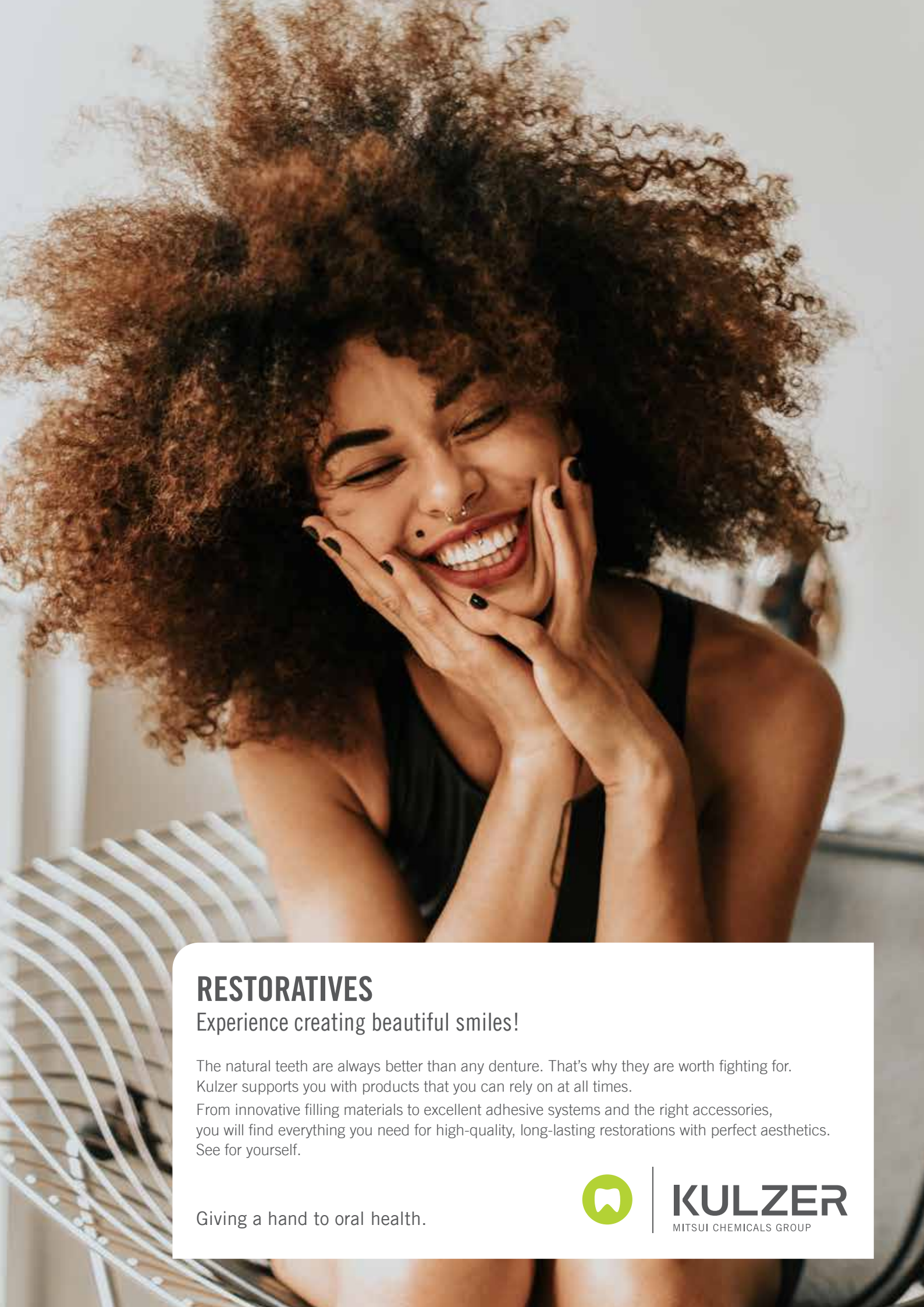
NEW



Charisma Bulk Flow ONE

The first flowable one-shade bulk-filling composite without the need for an additional capping layer.





RESTORATIVES

Experience creating beautiful smiles!

The natural teeth are always better than any denture. That's why they are worth fighting for. Kulzer supports you with products that you can rely on at all times.

From innovative filling materials to excellent adhesive systems and the right accessories, you will find everything you need for high-quality, long-lasting restorations with perfect aesthetics. See for yourself.

Giving a hand to oral health.



KULZER
MITSUI CHEMICALS GROUP

1 RESTORATIVES

1.1 FILLING MATERIALS



CHARISMA® DIAMOND — DISCOVER THE NEXT DIMENSION OF NATURAL BEAUTY.

The nano-hybrid composite Charisma Diamond expands the boundaries of aesthetics, quality and performance. Thanks to its innovative formula it provides all the exceptional properties you expect from such an aesthetic, state-of-the-art composite.

The Charisma Diamond **versatility:**

The patented TCD-matrix and the developed nano-hybrid filler system result in improved aesthetics, durability and handling. This means minimum shrinkage and shrinkage stress, very smooth surface, high resilience and optimized surface hardness.

The Charisma Diamond **chemistry:**

Charisma Diamond adapts to the color of the surrounding tooth structure for an outstandingly natural look. What's more, the Charisma Diamond layering technique is a distinct aesthetic advantage and ensures virtually undetectable restorative margins. Now, you easily achieve excellent results for a very wide range of cases and indications, using the multi-layer technique with 21 shades to choose from.

The Charisma Diamond **workability:**

Charisma Diamond offers minimal stickiness and improved efficiency during sculpting. It also provides an extended working time even if illuminated by operating light. Ultra-fine filler particles create a polish that is comparable to natural enamel.



Charisma Diamond Shade Guide

Art. code 6604 4554



Charisma Diamond Syringe Refills

1 x 4g Syringe in all shades shown below



■ Opaque dentine shade
■ Universal shade

■ Incisal - translucent
■ Incisal - opalescent

Opaque Dentine		OB		OL	OM	OD		
Universal		BXL	BL	A1	A2	A3	A3.5	A4
				B1		B2	B3	
					C2	C3		
					D3			
Incisal	Translucent					CL		
						AM		
	Opalescent					CO		
						YO		

1 RESTORATIVES

1.1 FILLING MATERIALS

CHARISMA® DIAMOND ONE – ALWAYS GRAB THE RIGHT SHADE FOR NATURAL-LOOKING RESTORATIONS.

Since its launch in 2010, Charisma Diamond has expanded the boundaries of aesthetics, quality and performance. With the new Charisma Diamond ONE Shade it is easier than ever to achieve an outstandingly natural look even in the posterior region.

Charisma Diamond ONE Shade blends seamlessly into the surrounding dentition, independent of the tooth shade, enabling restorations to simply disappear. This offers a new one-shade solution for the majority of everyday cases.



ONE SHADE FOR ALL – THANKS TO THE AMAZING ADAPTIVE LIGHT MATCHING:

Charisma Diamond ONE Shade determines the shade of the restoration by absorbing the lightwaves that are reflected by the surrounding tooth shade.

Occlusal cavities in differently shaded artificial teeth filled with Charisma Diamond ONE Shade.



EXTREMELY DURABLE: THE UNIQUE TCD-MATRIX WITH OPTIMISED NANO-HYBRID FILLER SYSTEM

ONE Shade also benefits from the unique combination of high strength and low shrinkage stress of Charisma Diamond which has been well-documented and tested in various clinical studies.

Why is that remarkable?

Long-lasting restorations: The unique TCD-matrix and the optimised nano-hybrid filler system make Charisma Diamond highly resistant against mastication forces. This minimises restoration fractures, that are, together with secondary caries, the main reasons for filling failures.

Assured biocompatibility: Through the usage of our TCD-matrix, Charisma Diamond ONE Shade is entirely free of bis-GMA and BPA-related monomers.



Art Code	Package	Content
Charisma Diamond One Shade		
6608 7169	Charisma Diamond Syringe Refill 1 x 4g ONE	1 x 4g
6608 7171	Charisma Diamond ONE Kit	2 x 4g Syringes of Charisma Diamond ONE shade 1 x 4ml Gluma Bond Universal bottle

1 RESTORATIVES

1.1 FILLING MATERIALS

CHARISMA® TOPAZ – INNOVATIVE CHEMISTRY FOR DAY-TO-DAY NATURAL RESTORATIONS.

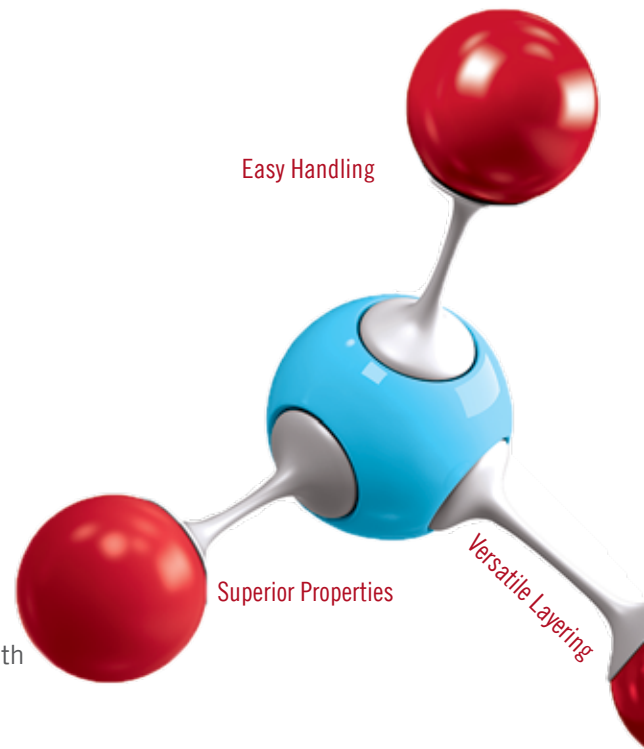
The Charisma brand is trusted all over the world for its easy handling, high quality and reliability in restorations.

That is why incorporating the most successful features of Charisma composites in one product just seemed logical to us.

The result is Charisma Topaz, a light-curing, radiopaque nano-hybrid composite based on the patented TCD-matrix. This innovative formula combined with the approved easy Charisma handling works as the foundation for down-to-earth restorations of natural beauty.

Charisma Topaz is the **three-in-one composite solution:**

- **Easy handling:** Charisma Topaz offers a creamy, yet stable consistency with an extended working-time and a high, long-lasting gloss after polishing.
- **Superior physical properties:** Charisma Topaz now features our patented TCD matrix, which combines high flexural strength and minimal shrinkage. In addition, it is compatible to all commonly used bonding materials and techniques.
- **Versatile layering:** Apply easy single-shade layering or multi-shade layering techniques for your more complex cases. You always get durable natural restorations.



Charisma Topaz Basic Kit

6 x 4g Syringes (A2, A3, A3.5, B2, CL, OM)
GLUMA Bond Universal, GLUMA Etch 35 Gel,
Layering Guide.

Art. code

6606 7179



Charisma Topaz Master Kit

10 x 4g Syringes (A1, A2, A3, A3.5, B2, C2, CL,
OL, OM, OD)
GLUMA Bond Universal, GLUMA Etch 35 Gel,
Layering Guide.

Art. code

6606 7180



Charisma Topaz Syringe Refills

1 x 4g Syringe for 16 shades:
Enamel: A1, A2, A3, A3.5, A4, B1, B2,
B3, C2
Dentine: OL, OM, OD
Incisal: CL, CO
Bleach: BL, OB



Charisma Topaz Shade Guide

Art. code

6606 7181



CHARISMA® TOPAZ ONE – YOUR EVERYDAY CASES MEET THE ALL-IN-ONE SOLUTION.

Charisma Topaz is known for combining the most successful and clinically experienced features of the Charisma composites.

In addition to that, the universal composite for day-to-day natural restorations now offers a new one-shade solution for the majority of everyday cases.

Charisma Topaz ONE Shade blends seamlessly into the surrounding dentition, independent of the tooth shade, enabling restorations to simply disappear. This makes it easier than ever to achieve an outstandingly natural look even in the posterior region.

Your **one-shade solution** for everyday cases.

- **Always grab the right shade:** With the incredible shade-matching properties of ONE shade the restoration becomes invisible by blending into any surrounding dentition.
- **Efficient handling:** Modelling is now so easy, thanks to the composite's non-slump consistency and minimal stickiness.
- **Long-lasting restorations:** The Kulzer composite experience minimizes fracture and chipping thanks to the unique TCD matrix with a long-term clinical experience to prove it.

'Before and After' case by Dr. Marco Veneziani, using Charisma Topaz ONE:



Excavated cavity with pulp capping.



End result. The restoration matches perfectly into the tooth structure.



Art Code	Package	Content
Charisma Topaz One Shade		
6608 7170	Charisma Topaz Syringe Refill 1 x 4g ONE	1 x 4g
6608 7172	Charisma Topaz ONE Kit	2 x 4g Syringes of Charisma Topaz ONE shade 1 x 4ml Gluma Bond Universal bottle

1 RESTORATIVES

1.1 FILLING MATERIALS

CHARISMA® CLASSIC –

EXPERIENCE & EASE = MICROGLASS® II EFFECT.

Charisma Classic is the very first composite to offer the second generation of Microglass filler technology. We developed this new and enhanced technology in close cooperation with practitioners worldwide to meet your requirements for composite workability and natural brilliance. Single-shade layering techniques have never been easier!

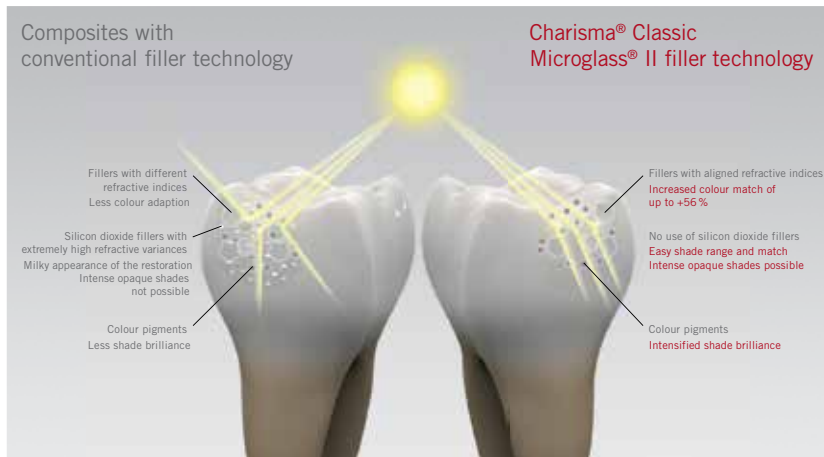
Microglass II effect –

What you see is what you get!

As all refractive indices of our matrix and filler system have been optimally aligned, the new filler technology offers an intrinsic shade brilliance and increased color adaption of up to 56%.

For you that means:

- Really easy single-shade layering techniques, more natural restorations and fast modeling, thanks to its creamy consistency.
- Convenient shade selection and matching.
- Easier masking of discolorations.



Charisma Classic Syringe Assortment 4x4G

1 x 4 g Syringe each of the shades: A1, A2, A3, OA2

Art. code

6605 6110

Charisma Classic Syringe Assortment 8x4G

2 x 4 g Syringe each of the shades: A2, A3
1 x 4 g Syringe each of the shades: A1, A3.5, B2, OA2

Art. code

6605 6111

Charisma Classic Combi Kit 6x4G

2 x 4g Syringe each of the shades: A2, A3
1 x 4g Syringe each of the shades: A1, A3.5
1 x 4 ml Bottle of GLUMA 2Bond
2 x 2.5 ml Syringe of GLUMA Etch 35 Gel

Art. code

6605 6109



Charisma Classic Combi Kit 8x4G

1 x 4 g Syringe each of the shades: A1, A2, A3, A3.5, B2, C2, OA2, OA3
1 x 4 ml Bottle of GLUMA 2Bond
2 x 2.5 ml Syringe of GLUMA Etch 35 Gel

Art. code

6605 6108

Charisma Classic Shade Guide

Art. code

6605 6113

Charisma Classic Syringe Refills

1 x 4g Syringe for 12 shades:
Enamel: A1, A2, A3, A3.5, A4, B1, B2, B3, C2
Dentine: OA2, OA3, OA3.5

1 RESTORATIVES

1.1 FILLING MATERIALS

CHARISMA®

CHARISMA® SMART – YOUR EVERYDAY CHOICE OF GREAT VALUE.

Charisma Smart provides the smart way towards natural everyday restorations. It is an uncomplicated universal composite for everyday restorations with great value. We developed this light-curing, radiopaque filling material to cover your requirements for composite workability.

Your benefits at a glance:

- You can now perform care-free, simple single-shade layering techniques.
- Its color-stabilizing technology and easy polishability prevent staining of composite restorations in the long run.
- Both features ensure natural results with little effort and bring real ease to your workflow.
- You get to feel comfortable with its easy handling characteristics and vital shades.
- Excellent handling and modelling properties arise from our long-standing experience in composite technology.



Charisma Smart Syringe Assortment 6x4G

2x4 g Syringes each of the shades A2, A3
1x4 g Syringe each of the shades A1, A3.5

Art. code 6606 0441



Charisma Smart Syringe Combi Kit 4x4G

1 x 4 g Syringe each of the shades A1, A2, A3, B2
1 x 4 ml Bottle of GLUMA Bond5
1 x 2.5 ml Syringe of GLUMA Etch 35 Gel

Art. code 6606 0399



Charisma Smart Syringe Combi Kit 8x4G

2x4 g Syringes each of the shades A2, A3
1x4 g Syringe each of the shades A1, A3.5, B2, Dentine
1 x 4 ml Bottle of GLUMA 2Bond
2 x 2.5 ml Syringe of GLUMA Etch 35 Gel

Art. code 6606 0400



Charisma Smart Syringe Refills

1 x 4g Syringe for 7 shades:
A1, A2, A3, A3.5, B1, B2, Dentine

1 RESTORATIVES

1.1 FILLING MATERIALS

CHARISMA® BULK FLOW ONE – SIMPLIFICATION AT ITS BEST!

Charisma Bulk Flow ONE is the first EVER flowable, one-shade, bulk-filling composite without the need for an additional capping layer.

As a further universal shade solution for everyday cases, it is the ideal choice for restorations in the posterior region.

The flowable consistency makes it the composite of choice for bulk-filling with increments of up to 4 mm.

Due to the incredible shade matching properties of all ONE composites, it represents the first flowable one-shade bulk-filling composite in the dental market that adapts to any tooth shade from A1 to D4.



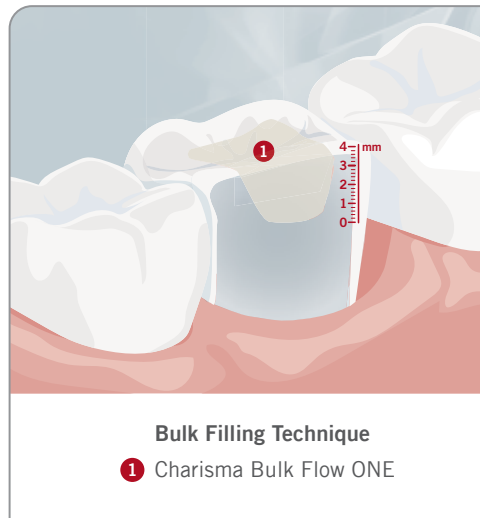
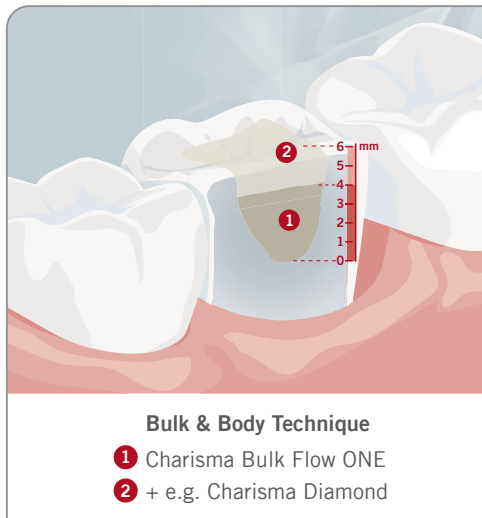
Art Code	Package	Content
Charisma Bulk Flow ONE Refills		
6609 4725	Charisma Bulk Flow ONE SYR 1x2g	1 x 2g syringe 5 x cannulas 1x IFU
Charisma Bulk Flow ONE Value Packs		
6609 5336	Charisma Bulk Flow ONE Value Kit Syringe	10 x 2g syringes 10 x 5 cannulas 1 x pictorial card 1 x IFU

Scan the QR code and find out more information on Charisma Bulk Flow ONE benefits and indications:



CHARISMA® BULK FLOW ONE –

Enjoy the combination of the self-levelling effect of a flowable material with a high curing depth and good stability after application. This allows to place increments of up to 4 mm inside a cavity, and then choose whether you wish to place an extra layer of universal composite or not. It's up to you!



Why your colleagues all over the world trust this product?

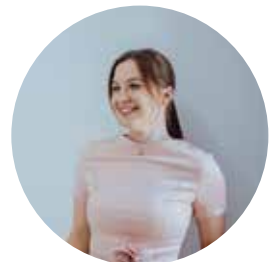


"I really like Charisma Bulk Flow ONE's chameleon effect because it simplifies the process of creating fillings and it allows for easy and quick management of 4 mm bulk layers."

**Dr. Alexandru Stănescu,
Romania**

"With Charisma Bulk Flow ONE I can work on deep cavities in much less time, with great color adaptation! What particularly delights me about this composite is its glossy look without the need to add a final layer!"

Dr. Sara Krog, Croatia



"Safe – easy to use – practical! It's amazing how fast I can finish with challenging, deep margin cases using this product!"

Dr. Ilay Baydili, Turkey



"With this composite I have significantly reduced the overall treatment time and chair time for my patients, since there is no longer a need for layering or shade selection!"

Dr. Harris Stergios, Greece



"I use Charisma Bulk Flow ONE because it flows better than the composite I was previously using! I don't have to worry about the color matching, and most importantly, it speeds up the filling process which is crucial, especially when my patient is a child."

**Dr. Joanna Piotrowicz - Wójcicka,
Poland**

1 RESTORATIVES

1.1 FILLING MATERIALS

CHARISMA® FLOW —

NATURALLY SIMPLE. NATURALLY RELIABLE.

Charisma Flow is the ideal flowable supplement to our micro-hybrid composite Charisma Classic. Its low viscosity and good thixotropy makes it the ideal choice for many indications like cavity lining, fissure sealing, minimal invasive fillings and bracket retention.

The **Charisma Flow Baseline** is a white and opaque shade that can be applied on the cavity floor to mark the transition to the natural hard tooth tissue. This means that unnecessary drilling away of healthy hard tooth tissue when removing an insufficient filling can be avoided.

Charisma Flow stands for safe usage and a high standard of naturally reliable restorations:

- Versatile all-rounder for many indications.
- Easy and fast handling due to its low viscosity and good thixotropy.
- Its radiopacity enables a save and reliable diagnosis.
- Pronounced chameleon effect.
- Shades of Charisma Flow optimally match the Charisma Classic shades.



Charisma Flow Syringe Refills

1 x 1.8g Syringe for 9 shades:
Enamel: A1, A2, A3, A3.5, B2, B3
Dentine: OA2, OA4
Baseliner

CHARISMA® OPAL FLOW —

THE PERFECT TOUCH FOR YOUR AESTHETIC RESTORATIONS.

Charisma Opal Flow is just the ideal completion of the Charisma brand. Because of its very good controllable viscosity, the minimal invasive tasks will be even more uncomplicated.

The composite stands for diagnosis-safe radiopacity and easy handling. With this addition to either Charisma Diamond or Charisma Topaz you get everything you need for durable and safe restorations. It's also ideal for small repairs of direct and indirect restorations combined with a suitable bonding agent, as well as splinting of mobile teeth.

- **Excellent handling properties:** Charisma Opal Flow creates a uniform, smooth surface in areas of the cavity that are difficult to access. The flowable composite is applied in a non-dripping syringe and retains its shape and position following application.
- **Naturally perfect, durable restorations:** Charisma Opal Flow shows low shrinkage and high flexural strength for naturally perfect, durable restorations. The compact shade system with its 7 colors can be combined with all commercially available acrylate based composites.
- **Safe diagnosis:** The composite filling is easily distinguished from the residual tooth structure due to its excellent radiopaque properties. Charisma Opal Flow ensures an optimal, reliable diagnosis.



Charisma Opal Flow Syringe Refills

1 x 1.8g Syringe for 7 shades:
Enamel: A1, A2, A3, A4, B2
Dentine: OM
Baseliner

1 RESTORATIVES

1.2 LIGHT CURING, POLISHING & INDIVIDUALIZATION

STARLIGHT PRO – SAFE AND EFFECTIVE POLYMERIZATION.

Starlight pro is a cordless LED curing light for the polymerization of light curing dental material such as adhesives and filling materials. With Starlight pro you consistently produce high-quality and safe restorations in a dominant wave range of 440-465 nm.

Moreover, thanks to its high performance level and the long-lasting lithium-ion battery, it will run for 320 cycles of 10 seconds each in succession and recharging takes only 120 minutes.

- Power Density 1400 mW/cm².
- Sterilizable, fiber optics conductor, Ø 8 mm.
- Does not require a fan as it develops no heat – silent.
- The smooth, continuous and compact surface enables perfect disinfection
- Constant light power regardless the charge level.
- The double acoustic signal is activated when the battery is still sufficient for 6 cycles.
- Only 120 minutes charging time and 320 cycles with 10 seconds mode
- Integrated radiometer.
- Green control LEDs indicating mains supply and signaling consent for charging process and power output.



Art. code

6609 6829

Hand piece incl. rechargeable battery, 8 mm light guide 45°, glare shield, charging unit, power supply.

CHARISMA® EASYSHINE – HIGH LUSTRE IN ONE SINGLE STEP.

Meet our Charisma EasyShine polishers!
The diamond enhanced formula delivers excellent, long lasting polishing results through a pressure controlled polishing process. This way you can secure prevention from plaque accumulation and reduction of risk for secondary caries.

6 pieces kit in 3 shapes (Flame, Large Flame, Cup)



Art. code

6606 0002

Available separate refills in each shape

VENUS® COLOR – INDIVIDUAL, JUST LIKE YOUR PATIENTS.

Many patients do not want their teeth to be recognized as 'new'. They want their characteristic tooth-color after treatment. Hence, a touch of color is sometimes needed to restore your patient's individual appearance. In order to achieve this, Kulzer offers you Venus Color flowable characterization system in five different shades:

Venus Color Syringe Refills

1 x 1g Syringe for all shades mentioned above



Venus Color Syringe Assortment

5 x 1g Syringes (White, Blue, Corn, Amber, Choco)

Art. code

6605 4221

TRUSTED BONDING



Connects what
belongs together —
in every respect.



kulzer.com/trust-glumabond



KULZER
MITSUI CHEMICALS GROUP

1 RESTORATIVES

1.3 ADHESIVES

GLUMA®

GLUMA® BOND UNIVERSAL – THE ALL-IN-ONE DROP.

Kulzer and long-term bonding expertise go hand-in hand! That's why we developed GLUMA Bond Universal – a universal bonding answering to all your bonding needs. It is a reliable and highly effective adhesive that ensures successful long-term restorations along with really easy handling properties!

Our unique moisture control system containing MDP makes the air-drying just as easy and provides a homogeneous bonding layer. Thanks to our exclusive drop control you can be sure to apply just as much adhesive as you need. With GLUMA Bond Universal, you bond efficiently and economically and you are sure to have created the required precondition for a long-lasting restoration.



You just need one bottle!

... for all techniques

Whether you prefer the total-etch-, selective etch or self-etch-method – you always get reliable bond strength.

... for all dental materials

GLUMA Bond Universal is compatible with all kinds of dental materials – light-, self- or dual-cure materials, resin cements, core- build-up materials, self-cure/ dual-cure composites and compomers for the cementation of indirect restorations – without the need of a dual cure activator. Furthermore, repair restorations with zirconia, precious and non-precious alloys and composites can be carried out quickly and easily in only one layer.

... for a broad range of indications

- Bonding of direct restorations for all cavity classes, using light-curing, dual-curing or self-curing methacrylate-based composites / compomers.
- Sealing of hypersensitive tooth areas.
- Sealing of cavities prior to amalgam restorations.
- Bonding of fissure sealants.
- Sealing of cavities and core preparations prior to temporary cementation of indirect restorations (according to the immediate dentine sealing technique).
- Cementation of indirect restorations with light-curing, dual-curing or self-curing adhesive resin cements.
- Intraoral repair of composite and compomer restorations, porcelain fused to metal, metal and all-ceramic restorations.



GLUMA Bond Universal Bottle Refill
1 x 4 ml Bottle & Pictorial Card

Art. code

6606 1421



GLUMA Bond Universal Value Pack
3 x 4 ml Bottles & Pictorial Card

Art. code

6606 1422

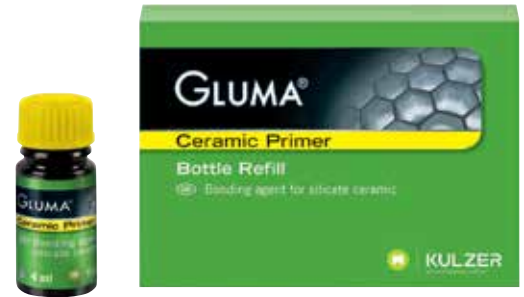
1 RESTORATIVES

1.3 ADHESIVES

GLUMA® CERAMIC PRIMER – REPAIRING CERAMICS? EASY!

GLUMA Bond Universal can bond to the following surfaces: zirconia, precious and non-precious alloys, as well as composites/composmers. To bond and repair silicate/glass ceramics, GLUMA Ceramic Primer must be applied prior to GLUMA Bond Universal.

This amazing product is compatible with all light-curing, self-curing and dual resin cements (without the need of extra activator), while ensuring a secure and stable bond with silicate substrates.



GLUMA Ceramic Primer Bottle Refill
1 x 4 ml Bottle

Art. code

6606 1425

Repair of veneered zirconia restoration



Mesio-incisal chipping of a zirconia crown on tooth 41.



Roughen the damaged ceramic surface with a fine diamond bur (40µm) or sandblast to enhance retention.



If zirconia is veneered by feldspatic ceramics use: Apply GLUMA Ceramic Primer on the surface of the veneering material and allow it to evaporate for 20sec. Air dry.



Rub GLUMA Bond Universal on the fractured ceramic surface for 20sec. Air dry until the adhesive film does not move any longer and light cure for 10sec.



Apply the corresponding Charisma Topaz or Charisma Diamond composite shade. Light cure, polish and finish.



Completed ceramic repair examined 1 week later.

Repair of veneered zirconia restoration

STEP 1
Roughen the surface to be repaired with a diamond bur

STEP 2
Apply GLUMA Ceramic Primer

STEP 3
Apply GLUMA Bond Universal, air dry and light cure

STEP 4
Apply Charisma Topaz



Scan here and discover how to master universal adhesives application.

1 RESTORATIVES

1.3 ADHESIVES

GLUMA®

GLUMA® 2BOND – ULTIMATE CONVENIENCE.

Based on our long-term bonding expertise, we developed the Etch & Rinse adhesive system GLUMA 2Bond. It meets your everyday requirements for uncomplicated and state-of-the-art bonding. GLUMA 2Bond produces excellent adhesion to the enamel and the dentine, as well as an optimal marginal sealing. Furthermore it provides a desensitizing effect for sensitive patients or desensitization of hypersensitive areas.



Benefits for you:

- **More efficiency:** Due to its special formula, GLUMA 2Bond necessitates only one layer for priming, bonding and desensitizing.
- **More security:** GLUMA 2Bond provides excellent bond strength and ideal marginal sealing due to the innovative chemistry.
- **More reliability:** Numerous studies and tests have proven the bonding qualities of GLUMA 2Bond. More convenience: GLUMA 2Bond is a ready-to-use, one-bottle system. Simple application without prior mixing or shaking.

Benefits for your patients:

- **Less irritation:** The desensitizing effect reduces post-operative sensitivity.
- **Less preparation time:** GLUMA 2Bond is immediately effective, so you have significantly reduced chair time for your patients.
- **Less sensitivity:** GLUMA 2Bond can be used to seal hypersensitive areas of the teeth.



GLUMA 2Bond Bottle Assortment

1 x 4 ml Bottle
2 x 2.5 ml Syringes of GLUMA Etch 35 &
Pictorial Card

Art. code

6604 0973



GLUMA 2Bond Bottle Value Pack

3 x 4 ml Bottles & Pictorial Card

Art. code

6604 0971

GLUMA 2Bond Bottle Refill

1 x 4 ml Bottle & Pictorial Card

Art. code

6604 0972

1 RESTORATIVES

1.3 ADHESIVES

GLUMA® BOND5 –

TWO STEPS, ONE BOTTLE, NO PREPARATION TIME.

Based on our long-term bonding expertise, we developed the 5th generation etch & rinse one-bottle adhesive GLUMA Bond5. Produced to meet your everyday requirements for uncomplicated bonding, it exhibits excellent shear bond strength and ensures successful long-term restorations. GLUMA Bond5 produces excellent adhesion to the enamel and the dentine, as well as an optimal marginal sealing.

GLUMA Bond5 is ideally suited for:

- Adhesive fixing of direct composites, Polyglas® and compomer restorations.
- Adhesive fixing of indirect laboratory-fabricated ceramic, Polyglas® and composite restorations (inlays, onlays, veneers and crowns).

In GLUMA Bond5 you find the prerequisites for the stable and satisfying fixing of your restorations.

GLUMA Bond5 Refill

1 x 4 ml Bottle

Art. code

6605 7341



GLUMA® ETCH –

SAFE ETCHING.

GLUMA Etch Gel is an etching agent based on orthophosphoric acid. It is used to etch enamel and condition dentine in the context of adhesive filling therapy.

Your benefits at a glance:

- Clean and easy application.
- Reliable identification thanks to the color of the gel.
- Great value for money.

GLUMA Etch Gel is used for enamel etching and enamel/dentine etching using the total etch technique prior to the adhesive bonding of:

- composite and compomer restorations.
- laboratory-fabricated, indirect restorations (e.g., inlays, crowns, bridges, veneers).
- sealants.

GLUMA Etch 35 Gel Refill

2 x 2.5 ml Syringes of GLUMA Etch 35 Gel

Art. code

6600 0130





IMPRESSION TAKING — Perfectly fitting restorations without corrections!

Absolute precision and easy handling of the materials determine the results of your prosthetic work.

The first step begins with effective soft tissue management. Then, you can benefit from our comprehensive range of impression materials, including Addition and Condensation silicones, as well as alginates and bite registration materials. Our mixing device supports the efficiency of your treatment processes, making your daily work easier. Even when it comes to temporary treatments, we are determined to cover your requirements with high-performance materials.

Giving a hand to oral health.



KULZER
MITSUI CHEMICALS GROUP

BEAUTIFUL RETRACTION

NEW
for precise
and atraumatic
application



**RETRAXIL® —
BEAUTIFUL RETRAXION.**

RetraXil is an astringent retraction paste for temporary displacement of marginal gingiva and drying of the gingival sulcus. In addition to the displacement effect of the paste, the astringent aluminium chloride (15 %) provides a hemostatic effect. RetraXil retraction paste can be used before both analogue and digital impressions. It can also be used for cementing temporary and permanent restorations as well as for Class II and Class V fillings. In addition, RetraXil features the **thinnest cannula** on the market! This means that you can easily access the gingival sulcus, and benefit from an atraumatic application.

Your benefits:

- Ready to use: no risk of systemic overdose.
- Blue color contrast to the gingiva and teeth offers high visibility and good control when rinsing.
- Twisting aid offers secure fit of the cannula on the syringe and enables the cannula to be twisted on and off safely.
- Thin cannula offers precise and atraumatic application into the sulcus and interproximal areas.
- Compatible with analogue and digital impression techniques.
- Fewer work steps compared to retraction cord technique.

Art Code	Package	Content
RetraXil Packs & Refills		
6609 8180	RetraXil STARTER PACK	4 x 1g Syringes 2 x Twisting Aids 20 x Cannulas
6609 8179	RetraXil VALUE PACK	20 x 1g Syringes 10 x Twisting Aids 100 x Cannulas
6608 7214	RetraXil Twisting Aid Refill	2 x 10 pieces
6608 7215	RetraXil Cannula Refill	5 x 20 pieces





Variotime[®]

Timing: Variable.*
Impression: Perfect.



kulzer.com/variotime



KULZER
MITSUI CHEMICALS GROUP

*variable working time: 1:00 – 2:30 min.

2 IMPRESSION TAKING

2.2 A-SILICONE VPS PRECISION IMPRESSION MATERIALS

VARIOTIME® –

PERFECT IMPRESSION, ALWAYS.

Variotime combines outstanding performance and features with more than 30 years of Kulzer experience in VPS precision impression materials. It comes with a variable time concept which provides more leeway with starting the setting time. Because we want you to know the splendid feeling of freedom and reliability!

Freedom can be this simple!

- **Straightforward, adaptable handling:** You get one material with variable applications – for single crowns as well as multi-unit prosthetic restorations.
- **Automatic mixing:** With the Dynamix speed system you benefit from high-speed mixing and precise dispensing, also for Putty viscosities.
- **Convenient, time-saving working:** You gain more leeway with starting the setting time. With Variotime you have a variable working time, ranging from 1:00 - 2:30 minutes, and an always short intraoral setting time of 2:30 minutes.



2 IMPRESSION TAKING

2.2 A-SILICONE VPS PRECISION IMPRESSION MATERIALS

DYNAMIX® SPEED 2 – COMFORT AT THE PUSH OF A BUTTON.

When it comes to high-speed mixing, time-saving and simultaneously obtaining a consistent, void-free mixture, the decision is easily made: Practical cartridges and the functional Dynamix®speed 2 mixer by Kulzer are perfectly matched in this well-thought-out system featuring all the advantages of automatic mixing for impression materials.

What's new with Dynamix® Speed 2:

- Additional markings on the level indicator allow you to assess whether the remaining quantity is sufficient for another impression (upper/lower jaw). This helps to improve the impression-taking process in the practice.
- Avoids waste as you can make the best possible use of the contents of the cartridge.

Enjoy the benefits of high-speed efficiency and precision:

- Homogeneously and void-free mixed impression materials leading to precisely fitting prosthetic restorations.
- Reproducible material properties.
- Consistent quality of mix, independent of operator, for a constant precision of fit.
- High-speed mixing and precise dispensing, including for Putty viscosities.
- Easy and reliable handling.
- Savings in time and material.
- 3 selectable velocities.



Dynamix Speed 2 EU

Art. code

6609 3755



2 IMPRESSION TAKING

2.2 A-SILICONE VPS PRECISION IMPRESSION MATERIALS

VARIOTIME® – PRODUCT OUTLINE

VARIOTIME DYNAMIX CARTRIDGE REFILLS

Putty Refill

Content

2 x 380 ml Dynamix Putty
1 x 2 Dynamix Mixing Tips
1 x 1 Dynamix Fixation Ring

Art. code 6604 4995



VARIOTIME AUTOMIX 50ml CARTRIDGE REFILLS

Extra Light Flow Refill

Content

2 x 50 ml Extra Light Flow
1 x 10 Mixing Tips yellow

Art. code 6604 5040



Heavy Tray Refill

Content

2 x 50 ml Heavy Tray
1 x 10 Mixing Tips yellow

Art. code 6604 4998



Heavy Tray Refill

Content

2 x 380 ml Dynamix Heavy Tray
1 x 2 Dynamix Mixing Tips
1 x 1 Dynamix Fixation Ring

Art. code 6604 5000



Light Flow Refill

Content

2 x 50 ml Light Flow
1 x 10 Mixing Tips yellow

Art. code 6604 5038



Monophase Refill

Content

2 x 50 ml Monophase
1 x 10 Mixing Tips yellow

Art. code 6604 5032



Monophase Refill

Content

2 x 380 ml Dynamix Monophase
1 x 2 Dynamix Mixing Tips
1 x 1 Dynamix Fixation Ring

Art. code 6604 5034



Medium Flow Refill

Content

2 x 50 ml Medium Flow
1 x 10 Mixing Tips yellow

Art. code 6604 5036



VARIOTIME HANDMIX REFILL

Easy Putty Refill

Content

1 x 600 ml Easy Putty
(each 300 ml Base & Cat.)

Art. code 6604 4993



2 IMPRESSION TAKING

2.3 BITE REGISTRATION & SPECIAL INDICATIONS

VARIOTIME® BITE – BITE REGISTRATION ACCURATE TO DIMENSION.

Variotime Bite is a scannable VPS bite registration material that features the easy, efficient and safe processing you know from our Variotime precision impression material.

Benefits from the diversified features of Variotime Bite:

- **Extra hard:** Very high final hardness of Shore D 40 prevents undesirable shifts when you adjust the position of the casts in the articulator.
- **Extremely fast:** Offers a working time of 30 seconds and a fast intraoral setting time of 30 seconds.
- **Superb scannability:** Permits powder-free 3D data recording of the antagonists for CAD/CAM technology.
- **Distinct thixotropy:** Avoids flowing off from the occlusal surface into the interdental spaces and enables easy removal from the mouth. This enables you to precisely capture the occlusal surface while saving material.
- **Whipped cream-like consistency:** Assures a resistance-free bite without distortion. That makes bite registration stress-free for you – and your patients.
- **Easy to trim & grind:** Convenient processing with minimum risk of fracture.



Bite Automix Cartridge Refill

2 x 50 ml Variotime Bite
1 x 10 Mixing Tips green

Art. code

6604 5042

MEMOSIL® 2 – THE EXPERT FOR SPECIAL INDICATIONS.

MEMOSIL 2 is a transparent A-silicone for special indications.

Its transparency allows optical control when positioning aids (e.g. X-ray pellets). Light-curing is possible for filling and fixative materials through placeholders. The material is best suited for use as an occlusal stamp for light-curing posterior composites, an anterior stamp for provisionals, fillings and veneers, a fixation material for x-ray measuring spheres when planning implants and a transfer matrix for bracket constructions on the plaster model.

With MEMOSIL 2, you and your dental technicians benefit from:

- **Optical control:** Its transparency facilitates the positioning of aids. It also allows light curing of composites and fillings through the material.
- **Time saving:** MEMOSIL 2 can be applied directly into the patient's mouth.
- **Treatment comfort:** Thanks to its short time in mouth and the neutral taste and odor, patients are more at ease.
- **Automix:** The automix cartridge system saves you time and reduces the risk of registration errors.
- **More hygiene:** Processing of MEMOSIL 2 is clean and hygienic due to its direct and sterile application.

Memosil 2 Automix Cartridge Refill








2 x 50 ml Memosil 2
1 x 12 Mixing Tips green

Art. code

5003 5018



Variotime® VPS Impression Material Overview

		Delivery Form	Total Time	Setting Time	Working Time
Extra Light Flow		50 ml cartridge	3:30 – 5:00 min.	2:30 min.	1:00 – 2:30 min.
Light Flow					
Medium Flow					
Monophase		50 ml cartridge 380ml cartridge (Dynamix)	3:30 – 5:00 min.	2:30 min.	1:00 – 2:30 min.
Heavy Tray					
Putty		600ml tubs 380ml cartridge (Dynamix)	3:30 – 5:00 min.	2:30 min.	1:00 – 2:30 min.
Bite		50 ml cartridge			



upgrade

oxasil®

When something excellent becomes even better.

Discover our newest condensation impression material and why it stands out from the competition!

Giving a hand to oral health.



KULZER
MITSUI CHEMICALS GROUP

OXASIL® — THE RESULT OF ULTIMATE EXPERIENCE.

Oxasil is our latest hand-mix impression material, directly deriving from the inventor of Optosil/Xantopren. Since its introduction in the 1960s, Kulzer's C-silicone formula has been relied upon due to its precise reproduction of detail. Oxasil provides the experience and reliability of a hand-mix impression material and stands out from the competition with a highly active base and activator system*.

** Oxasil Light Flow and Oxasil Very Light Flow reach quick curing times while using only a small amount of activator. That is why the perfectly balanced system is among the most active in the market (Kulzer R&D).*

Your benefits at a glance:

- Highly effective activator and base system.
- Economical use.
- Easy mixing of the Soft Putty consistency.
- Noticeable viscosity increase after mixing while remaining flowable.
- Excellent workability during working time.
- Most frequent indications and further indications (like denture relining, functional impressions, fit checking, impressions for provisionals).
- Long pouring time with gypsum over 21 days.
- Fresh peppermint flavor.

Art Code	Package
Putty, Flow and Activator:	
6607 7391	OXASIL PUTTY 1 X 900 ml
6607 7390	OXASIL SOFT PUTTY 1 x 900 ml
6607 7393	OXASIL VERY LIGHT FLOW 1 X 140 ml (tube)
6607 7392	OXASIL LIGHT FLOW 1 X 140 ml (tube)
6607 7396	OXASIL ACTIVATOR PASTE 60 ml (tube)
Medium viscosity impression material for mucosa impressions:	
6607 7394	OXASIL MUCOSA 1 X 140 ml (tube)



2 IMPRESSION TAKING

2.5 PROSTHETICS ACCESSORIES

PRODUCT OUTLINE

ADHESIVE

Universal Adhesive
Suitable for:

Content

all Kulzer A- and C-silicones
1 x 10 ml Bottle

Art. code 6560 7758



DISPENSING GUNS FOR 50ml AUTOMIX CARTRIDGES

Dispensing Gun 2 (1:1/2:1)
Suitable for:

Content

Variotime Heavy Tray, Variotime Monophase,
Variotime Extra Light Flow, Variotime Light Flow,
Variotime Medium Flow, Variotime Bite, Memosil 2

Art. code 6600 1970



MIXING TIPS FOR 50ml AUTOMIX CARTRIDGES

Mixing Tip green (1:1)

Content

1 x 48 Mixing Tips for:
Variotime Heavy Tray, Variotime Monophase,
Variotime Bite, Memosil 2

Art. code 6600 1989



INTRAORAL MIXING TIPS

Intraoral Tip white

Content

1 x 96 Tips for Mixing Tip green (1:1)
for intraoral application of
Variotime Monophase

Art. code 6568 7514



Dispensing Gun (10:1)
Suitable for:

Content

Prevision Temp

Art. code 6603 6083



Mixing Tip yellow (1:1)

Content

1 x 48 Mixing Tips for:
Variotime Extra Light Flow,
Variotime Light Flow, Variotime Medium Flow

Art. code 6600 1988



Intraoral Tip yellow

Content

1 x 96 Tips for Mixing Tip yellow (1:1)
for intraoral application of Variotime
Extra Light Flow, Variotime Light Flow,
Variotime Medium Flow

Art. code 6600 0782



Bite Registration Tip

Content

1 x 96 broad intraoral Tips for Variotime
Bite

Art. code 6600 0905



DYNAMIX SPEED CARTRIDGE ACCESSORIES

Dynamix Mixing Tip

Content

1 x 50 Dynamix Mixing Tips
1 x 1 Dynamix Fixation Ring

Art. code 4000 4353



Dynamix Fixation Ring

Content

10 x 2 Dynamix Fixation Ring

Art. code 6604 7385



ALGINOPLAST® / ALLIGAT® / XANTALGIN® – GROWN FROM NATURE, PROCESSED WITH EXPERIENCE.

Alginates by Kulzer feature high accuracy of detail, elasticity as well as tensile strength, and are very compatible with gypsum. The mixing is easy and very convenient, being dust-free and clean.

We use high quality seaweed from preferred cultivation areas as a basis for our alginate impression materials. These alginates last longer without preservatives. Since they do not contain any chemical disinfectants, they are skin and gingiva friendly. Their mild peppermint taste also makes the impression more pleasant for the patient.

Alginoplast®

- Its stable consistency, offering detailed reproduction, is ideal for dentists who prefer a firm alginate with high stability.
- The fast setting variant saves time and is practical.
- The normal-setting variant is suitable for automatic mixing without time pressure during processing.

Alligat®

- Excellent detail reproduction.
- High modulus of elasticity & high fracture resistance.
- Due to the very good compatibility with plaster, you can always have models with high quality surface details.

Xantalgin®

- Its creamy mixing consistency is especially convenient for sensitive patients.
- Due to high tensile strength and elasticity, impressions may be removed over undercuts without any problems.
- The short setting time is time-saving and convenient.



Art Code	Package
ALGINATES	
6609 6907	ALGINOPLAST FAST SET 500 G
6600 1763	ALLIGAT 453 G
6601 8507	ALLIGAT CHROMA FAST SET 453 G
6609 6904	XANTALGIN CRONO 500 G
6609 6903	XANTALGIN SELECT SH 500 G

Art Code	Package
ACCESSORIES FOR ALGINATES	
6523 4064	XANTALGIN MIXING CUP
6523 4072	XANTALGIN SPATULA
6600 4600	ALGINATE BOX KULZER
6604 9368	ALGINATE POWDERSCOOP / WATERCUP SET
6607 6596	ALGINATE WATER DOSING BOTTLE

iCEM® SELF ADHESIVE – CEMENTATION MADE EASY!

iCEM Self Adhesive is a dual-curing all-in-one luting composite with dependable adhesive strength. It is applied easily, quickly and in a convenient way and reduces the risk of post-operative sensitivity. This means: etching, priming, bonding, desensitizing and cementing of indirect restorations in one step.

One material - multiple advantages!

- Etching, priming, bonding, desensitizing and cementing in one step.
- Dependable adhesive strength for durable restorations.
- Reduction of post-operative hypersensitivities.
- Flexible working time.
- Wide range of indications.

With iCEM Self Adhesive you can cement:

- metal and metal-ceramic crowns and bridges.
- all-ceramic crowns and bridges produced using CEREC-systems.
- crowns and bridges using reinforced ceramics (e.g. zirconia).
- metal, ceramic and composite inlays and onlays.
- metal, titanium and glass fiber posts.
- nylon materials for splinting loose teeth.



Art Code	Package	Content
iCEM SELF ADHESIVE		
6603 6084	iCEM Syringe Refill	1 x 1 Automix Syringe x 5ml (7g) 1 x 15 Mixing Tips Pictorial Card
6603 7633	iCEM Syringe Value Pack	1 x 3 Automix Syringe x 5ml (7g) 1 x 45 Mixing Tips Pictorial Card
6603 6085	iCEM Mixing Tips Refill	1 x 50 Mixing Tips

PREVISION® TEMP — RELIABILITY IN TEMPORARY RESTORATIONS.

The fabrication of a provisional is an integral part of the fabrication process of fixed dental restorations. As a temporary solution the provisional fulfills numerous tasks: It protects the tooth-structure against thermal, chemical, mechanical and microbial stimuli. It preserves the occlusion and the masticatory function as well as restores esthetics and phonetics. Tooth movements like tilting or elongation are prevented and the marginal periodontal tissue is protected.

Finally, provisionals can also serve for diagnostic purposes when having abutment teeth with a doubtful prognosis or for prospective diagnostics (planned modifications of occlusion, phonetics or esthetics).

That's why Kulzer developed PreVISION Temp; A self-curing two-component temporary crown and bridge material, provided in the practical 10:1 automix cartridge. Its good mechanical properties allow for safe and aesthetically convincing results for a comfortable wearing time. So you and your patient can envision a representation of how the final restoration will look and feel.

Your benefits at a glance:

- Simple and time-saving application.
- Ideal mechanical properties.
- Highly aesthetic results and excellent polishability.
- Great fluorescence.
- Available in 5 VITA shades (A1, A2, A3, A3.5, B1) and BLEACH.



Art Code	Shade
PreVISION Temp 50ml Cartridge, 12 Mixing Tips, Pictorial Card	
6605 5526	A1
6605 5527	A2
6605 5528	A3
6605 5529	A3.5
6605 5530	B1
6605 5531	BLEACH
6605 6201	Mixing Tips blue (10:1) 48



PAIN CONTROL

All about your patients' relief!

Tooth sensitivity and pain are the factors that most affect your patients' well-being. That's when they mostly count on you, to relieve them of this unpleasant feeling.

Meet our desensitizing agent; it contains everything you need to reduce or even prevent hypersensitivity. The result is quick and effective, without mixing, hardening or multiple applications.

Moreover, our dental needles provide gentle solution for effective injections, with minimal penetration force, ensuring a low initial pain.

Giving a hand to oral health.



KULZER
MITSUI CHEMICALS GROUP

GLUMA® DESENSITIZER — GAINING VICTORY OVER PAIN.

Just one drop of GLUMA Desensitizer is sufficient to reduce and prevent hypersensitivity. The results appear quickly and effectively, without mixing, curing or multiple applications. Your patients feel immediate relief. Every good restoration starts with the GLUMA Desensitizer!

Its efficacy has been proven in over 50 million restorations globally. It can be used with all common adhesives and restoration materials and in every treatment situation. GLUMA Desensitizer neither needs to be stirred or light cured. This simplifies application and saves time.

How it works

- **Desensitizes:** GLUMA Desensitizer is the only desensitizer proven to penetrate exposed dentinal tubuli up to 200 µm1. The result is the formation of multiple layers of protein septa that prevent intertubular fluid movements due to osmotic changes.
- **Inhibits bacteria:** GLUMA Desensitizer provides a hermetic seal that acts as a microbial barrier, inhibiting bacterial growth.
- **Re-wet:** GLUMA Desensitizer resurrects collapsed collagenous fibers, improving the bond strength of many adhesives.

Indications

For the reduction or elimination of pain caused by hypersensitivity in exposed cervical areas that do not require restorations, and of dentine sensitivity after preparation of teeth to receive fixed prosthesis or direct restorations.

How to use GLUMA Desensitizer

You can use our desensitizer below every restoration – direct and indirect – to ensure your patients the comfort they deserve!

You can apply it below: ▪ Crowns ▪ Bridges ▪ Inlays and onlays ▪ Veneers and temporaries ▪ Margins around temporary crowns ▪ All direct restorations

You can also cover: ▪ Cervical erosions ▪ Exposed dentine surfaces ▪ Tooth hypersensitivity caused by gingival recession

GLUMA Desensitizer Bottle Refill
1 x 5 ml Bottle & Pictorial Card

Art. code

6600 3764



3 PAIN CONTROL

3.2 NEEDLES

SeleKt+® —

THE RIGHT NEEDLE FOR EVERY INDICATION.

With our SeleKt+ Dental Needles we follow our conviction that the best injection is one which the patient does not feel. That is why we use only first-class steel and innovative grinding for our cannulas.

SeleKt your advantages

Our unique short bevel needles are ideally suited for intraligamentary anaesthesia, reducing the risk of needle kinking.



With its minimal penetration force the triple bevel is kind to the tissue and supports a low initial pain.

More safety with the new Kulzer rainbow label: High-quality paper label make sure the needle has not been used before.



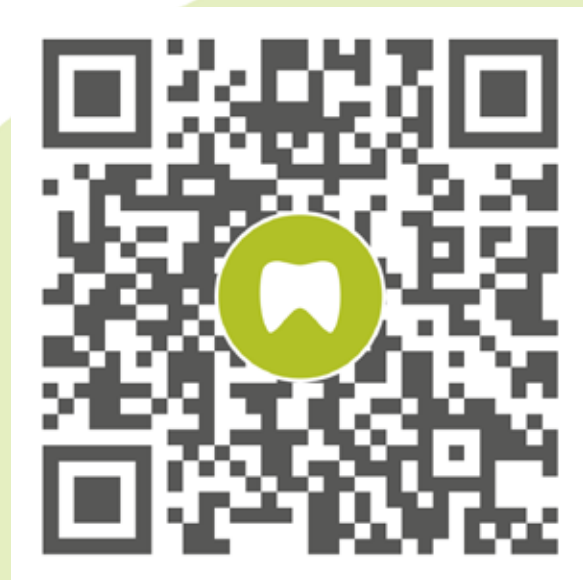
Our rainbow coloured coding system makes identification of different needle lengths quick and simple.



A reasoned portfolio based on the most requested sizes

Order No.	Product	Injection part length	Diameter	Rainbow label colour
66066214	SeleKt+ needle metric 30G; 0.3 x 12mm	12	0.3 mm	● blue
66066215	SeleKt+ needle metric 27G; 0.4 x 16mm	16	0.4 mm	● green
66066216	SeleKt+ needle metric 30G; 0.3 x 21mm	21	0.3 mm	● yellow
66066217	SeleKt+ needle metric 30G; 0.3 x 25mm	25	0.3 mm	● orange
66066218	SeleKt+ needle metric 27G; 0.4 x 35mm	35	0.4 mm	● red

Our new YouTube channel is here!



Scan the QR code.
Hit the Subscribe button.
Join our dental community!



Kulzer GmbH

Leipziger Straße 2 63450
Hanau, Germany

info.dent@kulzer-dental.com

Kulzer Eastern Europe

info.eeu@kulzer-dental.com

kulzer.com